

BARRON TABLELAND RAILWAY

Archived pages from earlier versions of LATEST NEWS

This was the last entry for 2013

28 August, 2013 - Tabletop Station completed.



Tabletop station platform is merely an Awning, providing shade and fresh air.



The platform is accessed from the sub-terranean Ticket Office and Station Masters Office via a staircase at the end of the platform.

If there is an item of interest to you that is no longer “clickable” on the website, just email me as I am happy to share and provide.

BARRON TABLELAND RAILWAY

Archived pages from earlier versions of LATEST NEWS

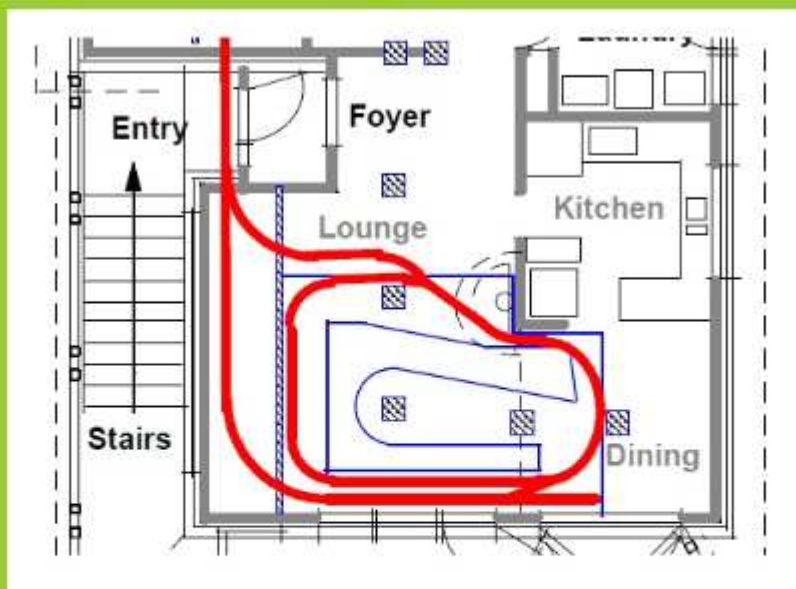


Passengers await the arrival of the next train.

BARRON TABLELAND RAILWAY

Archived pages from earlier versions of LATEST NEWS

29 April, 2013 - Basement Loop completed.



In the basement, the addition of several turnout points has yielded a balloon reversing loop, a wye and an ovoid circuit of track. These allow more flexibility in train reversing, arraying and fiddle yard 'consist' / storage.

Five complete trains can be set out on the ovoid circuit. They can be run {simultaneously} around the circuit until the required train reaches the set of points that divert it to the line leading out into the back yard Garden Railway.

With no trains arrayed on the circuit, a train can be run indoors if need be. When doing train maintenance, a loco / train can be run around for testing.

Locomotives [or whole trains] can be reversed, either via balloon loop, or via the WYE.

BARRON TABLELAND RAILWAY

Archived pages from earlier versions of LATEST NEWS

22 March, 2013 - Diesel 1620 Class has been modified.



Before this modification, couplers swung out over curves.
This caused trailing wagons to derail at tangent to curved track.
So Geof SPLIT the buffer beams then Bogie mounted the lower buffer beams.



Now the couplers stay closer to track alignment and derailments avoided.

BARRON TABLELAND RAILWAY

Archived pages from earlier versions of LATEST NEWS

15 March, 2013 - Ohhh ! THOMAS - What have they done to you?



Geof inherited a Bachmann THOMAS THE TANK Engine that had been reworked by a fellow modeler. The model as received had been BLACKENED. Geof set about re-building it to BTR "family" look.

3 March, 2013 - The latest addition to the BTR locomotive Roster.



The Garratt 0-4-0 0-4-0; click on photo above to see how it was built. A strong Loco that has appeal.

BARRON TABLELAND RAILWAY

Archived pages from earlier versions of LATEST NEWS

26 February, 2013 - Fresh from the paint shed, an ALJ Class wagon for the BTR.



Click on photo above to see how it was built.
Model made of plywood clad with profiled styrene.

To view even earlier versions of Latest News, go back to main page, then click the box at the foot of that page.

If there is an item of interest to you that is no longer “clickable” on the website, just email me as I am happy to share and provide.